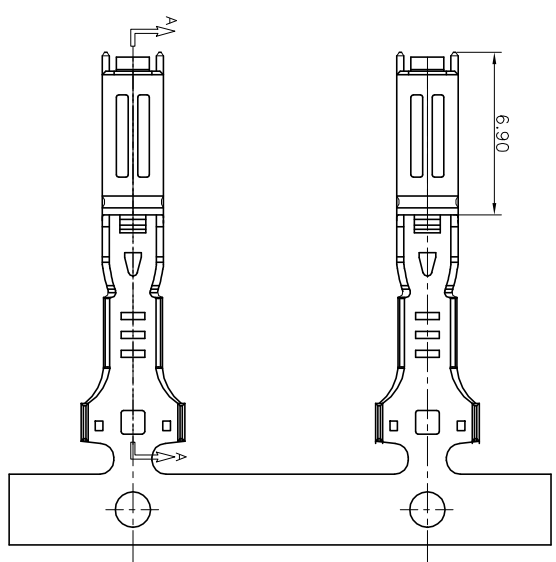
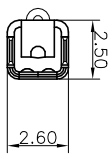
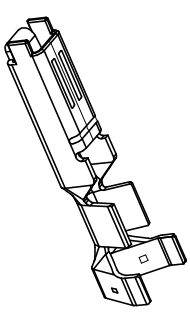


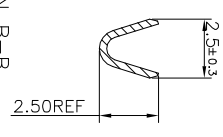
- NOTES:
1. MATERIAL: C5210-1/2H, THICKNESS 0.30±0.03 .
  2. PLATING:
    - L: 10~30μ" NICKEL UNDERPLATING
    - 50~100μ" TIN PLATING(PURE TIN)
  3. ALL UNSPECIFIED CORNERS AND RADIUS NOT TO EXCEED R0.1mm
  4. ALLOWABLE WIRE RANGE: 0.50mm<sup>+</sup> AVSS.
  5. SPEC.PLS.REFER: SPEC-92415-XXXXX-XXX
  6. PART NUMBER

92528-T 0 X X-CA1

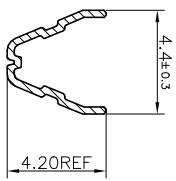
2: C5210-1/2H  
L: PURE TIN



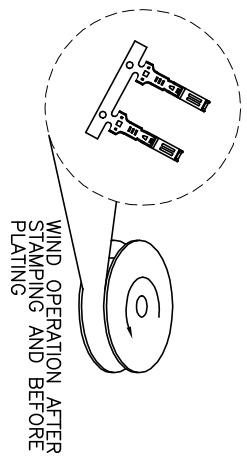
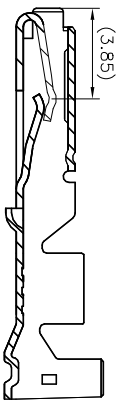
SECTION B-B



SECTION C-C



SECTION A-A



|  |       |             |          |                  |                |
|--|-------|-------------|----------|------------------|----------------|
| QUALITY SYMBOLS                          |       | DRAWN BY    |          | DATE             |                |
| MAJOR                                    | MINOR | Xuyangyong  | 20/01/08 |                  |                |
| CRITICAL                                 |       | Checked By  | DATE     |                  |                |
| GENERAL TOLERANCES<br>(UNLESS SPECIFIED) |       | Liuwei      | 20/01/08 | TITLE            |                |
| X  | ±0.50 | APPROVED BY | DATE     | 2.0mm WTB Wafer  |                |
| XX                                       | ±0.25 | Liuwei      | 20/01/08 | SMT S/R R/A Type |                |
| XXX                                      | ±0.10 | UNITS       |          | SIZE             | REQ. NO.       |
| ANGLES                                   | ±2°   | MM          |          | A4               | SEE NOTES      |
|  |       | SCALE       |          | REV              | DWG. NO.       |
|  |       | 1:1         |          | A                | 92528-TOXX-CA1 |
|  |       | 1 OF 1      |          |                  |                |

**ACES ELECTRONICS**